

**ProFire LNXLG Series Product Information**  
**Vertical Configuration**  
**< 30 PPM Straight Gas**  
**37.8 - 63.0 MMBtu**



The LNXL series gas burner is a forced draft packaged burner system. A backward curved impeller provides combustion air for various furnace pressures or high altitude applications. The rear-access cover is hinged for convenient inspection or service of the firing head components.

Flue gas recirculation (FGR) is drawn through the burner blower assembly properly sized for the required NOx emission levels. An FGR control valve is positioned by the FGR system to provide FGR at all firing rates. The system is equipped with ANSI flanges to allow easy installation into the FGR piping.

The LNXL series is designed to provide less than 30 ppm NOx, corrected at 3% O<sub>2</sub> dry throughout the firing range when firing natural gas. CSD-1, GAP, FM, NFPA-85 and other regulatory agency control options are available.



**STANDARD EQUIPMENT**

- 120/1/60 Control Circuit
- Panel Signal Lights: Power On, Main Fuel, Ignition, and Flame Failure
- Burner Mounted Junction Box w/Remote Panel
- Combustion Air Proving Switch
- Air Dampers w/Silencer
- Burner Mounting Flange
- Gas-Electric Ignition
- Hinged Rear Access Cover

**SERIES FEATURES**

S = STANDARD  
 O = OPTIONAL  
 N/A = NOT AVAILABLE

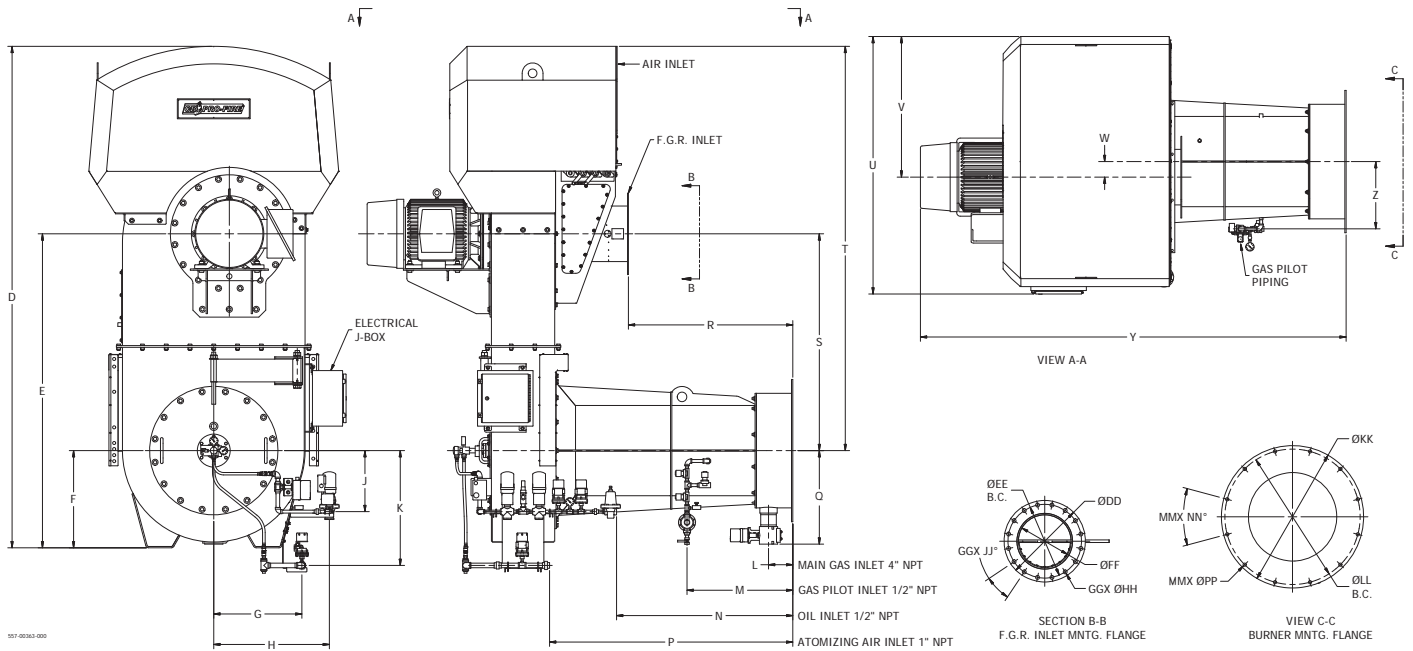
	LNXLG-378 LNXLG-420	LNXLG-462 LNXLG-504	LNXLG-546 LNXLG-588	LNXLG-630
Flame Safeguard with UV Scanner (IR Scanner Available)	S	S	S	S
3600 RPM Combustion Fan	S	S	S	S
Full Modulation Firing	S	S	S	S
Parallel Positioning System	S	S	S	S
Dry Oven	O	O	O	O
O <sub>2</sub> Trim	O	O	O	O
Variable Frequency Drive (VFD)	O	O	O	O
High & Low Gas Pressure Switches	S	S	S	S
Normally Open (N.O.) Vent Valve	S	S	S	S
Main Gas Regulator & (2) Gas Shutoff Cocks	S	S	S	S
Gas Flow Control Valves Mounted on Burner Piping	S	S	S	S

# SPECIFICATIONS & DIMENSIONS

BURNER MODEL	FRAME SIZE	GAS INPUT (MBH)	BHP @ 80% EFF.	MOTOR HP	BLOWER MOTOR VOLT/ PH 60 HZ.	FURNACE PRESS. ("W.C.)	GAS PRESSURE REQUIRED (PSI)	FGR LINE PIPING SIZE
LNXLG-378	1	37,800	900	40	460/3	6.0	10	14
LNXLG-420	1	42,000	1,000	50	460/3	7.2	10	14
LNXLG-462	1	46,200	1,100	60	460/3	7.5	10	14
LNXLG-504	2	50,400	1,200	60	460/3	7.7	10	16
LNXLG-546	2	54,600	1,300	75	460/3	8.1	10	16
LNXLG-588	2	58,800	1,400	75	460/3	8.4	10	16
LNXLG-630	2	63,000	1,500	100	460/3	9.6	10	16

**NOTES:**

1. Gas input based on natural gas at 1,000 Btu/cu.ft. and 0.60 gravity.
2. Gas pressure based on zero furnace pressure. For total pressure at manifold, add furnace pressure.
3. Boiler overall efficiency of 80% estimated.
4. Blower wheel and motor HP is based on altitude up to 2,000 ft. above sea level. For higher altitude or 50 Hz. applications, consult factory.
5. Firing at higher furnace pressures de-rates the burner by approximately 5% per 1/2" of additional pressure, consult factory.
6. Other motor voltages available, consult factory.



**STANDARD CONFIGURATION**

BURNER MODEL	D	E	F	G	H	J	K	L	M	N	P	Q	R	S	T	U
SIZE 1	137 1/4	83 3/8	26 5/8	24	31 3/4	17 5/8	34	6 5/8	28	50 7/8	70 1/8	23 3/8	46	56 3/4	110 3/4	72 3/8
SIZE 2	144 1/2	90 1/2	28	25 1/2	33 3/8	17 5/8	33 1/8	7	30 1/2	50 7/8	70 1/8	27	47 1/2	62 1/2	116 1/2	74 1/4

BURNER MODEL	V	W	Y	Z	DD	EE	FF	GG	HH	JJ	KK	LL	MM	MN	PP
SIZE 1	38 1/2	3 5/8	113 1/4	16 1/8	21	18 3/4	13 1/4	24	1 1/8	15°	30	28 1/4	12	30°	1
SIZE 2	40 1/2	4 1/2	122 3/4	19 3/8	23 1/2	21 1/4	15 1/4	16	1 1/8	22 1/2°	41	39	12	30°	1