

ProFire LNXL Series Product Information
Horizontal Configuration
< 30 PPM Combination Gas / #2 Oil
67.2 - 92.4 MMBtu



The LNXL series combination gas/oil burner is a forced draft packaged burner system. A backward curved impeller provides combustion air for various furnace pressures or high altitude applications. The rear-access cover is hinged for convenient inspection or service of the firing head components. LNXL series combination gas/oil burners change from one fuel to the other by manually retracting the oil gun, and with the simple flip of a switch. No burner modifications or readjustments are required when changing from one fuel to the other. Compressor modules and main gas train components are shipped loose.

Flue gas recirculation (FGR) is drawn through the burner blower assembly properly sized for the required NOx emission levels. An FGR control valve is positioned by the FGR system to provide FGR at all firing rates. The system is equipped with ANSI flanges to allow easy installation into the FGR piping.

The LNXL series is guaranteed to provide less than 30 ppm NOx, corrected at 3% O₂ dry throughout the firing range when firing natural gas.



STANDARD EQUIPMENT

- 120/1/60 Control Circuit
- Panel Signal Lights: Power On, Main Fuel, Ignition, and Flame Failure
- Burner Mounted Junction Box w/Remote Panel
- Combustion Air Proving Switch
- Air Dampers w/Silencer
- Burner Mounting Flange
- Gas-Electric Ignition
- Hinged Rear Access Cover
- Fuel Changeover Switch

SERIES FEATURES

S = STANDARD
 O = OPTIONAL
 N/A = NOT AVAILABLE

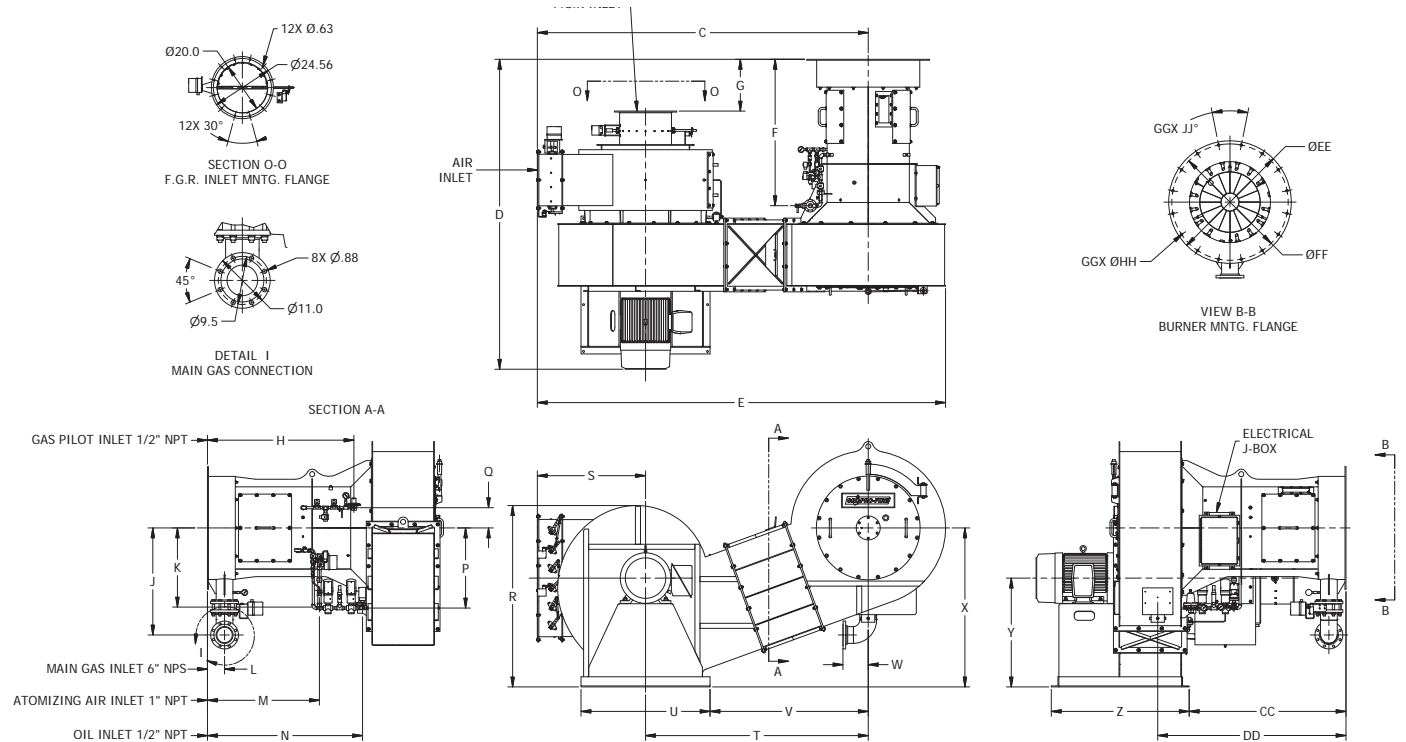
| | LNXLG-672 | LNXLG-756 | LNXLG-840 | LNXLG-924 |
|---|-----------|-----------|-----------|-----------|
| Flame Safeguard with UV Scanner (IR Scanner Available) | S | S | S | S |
| 1800 RPM Combustion Fan | N/A | N/A | S | S |
| Full Modulation Firing | S | S | S | S |
| Parallel Positioning System | S | S | S | S |
| Dry Oven | O | O | O | O |
| O ₂ Trim | O | O | O | O |
| Variable Frequency Drive (VFD) | O | O | O | O |
| High & Low Gas Pressure Switches | S | S | S | S |
| Normally Open (N.O.) Vent Valve | S | S | S | S |
| Main Gas Regulator & (2) Gas Shutoff Cocks | S | S | S | S |
| Gas Flow Control Valves Mounted on Burner Piping | S | S | S | S |
| 2-Way Motorized Oil Valve w/ Proof of Closure (POC) | S | S | S | S |
| Burner Mounted Oil Flow Control Valve | S | S | S | S |
| Separately Mounted Air Compressor Module | S | S | S | S |
| 3-Way Regulating Valve w/Relief Valve Upstream of Burner Oil Piping | S | S | S | S |
| High & Low Oil Pressure Switch | S | S | S | S |
| Atomizing Air Proving Switch & Fuel Oil Strainer (Shipped Loose) | S | S | S | S |

SPECIFICATIONS & DIMENSIONS

| BURNER MODEL | FRAME SIZE | GAS INPUT (MBH) | #2 OIL INPUT (GPH) | BHP @ 80% EFF. | MOTOR HP | SEPARATE COMP. MODULE MOTOR HP 3 PH. | BLOWER MOTOR VOLT/ PH 60 HZ. | FURNACE PRESS. ("W.C.) | GAS PRESSURE REQUIRED (PSI) | FGR LINE PIPING SIZE |
|--------------|------------|-----------------|--------------------|----------------|----------|--------------------------------------|------------------------------|------------------------|-----------------------------|----------------------|
| LNLLG-672 | 3 | 67,200 | 480 | 1,600 | 100 | 15 | 460/3 | 8.3 | 10 | 18 |
| LNLLG-756 | 3 | 75,600 | 540 | 1,800 | 100 | 15 | 460/3 | 8.8 | 10 | 18 |
| LNLLG-840 | 3 | 84,000 | 600 | 2,000 | 125 | 15 | 460/3 | 8.8 | 10 | 20 |
| LNLLG-924 | 3 | 92,400 | 660 | 2,200 | 125 | 15 | 460/3 | 8.9 | 10 | 20 |

NOTES:

- Gas input based on natural gas at 1,000 Btu/cu.ft. and 0.60 gravity.
- Gas pressure based on zero furnace pressure. For total pressure at manifold, add furnace pressure.
- Oil input based on No. 2 oil at 140,000 Btu/gal.
- Boiler overall efficiency of 80% estimated.
- Blower wheel and motor HP is based on altitude up to 2,000 ft. above sea level. For higher altitude or 50 Hz. applications, consult factory.
- Firing at higher furnace pressures de-rates the burner by approximately 5% per 1/2" of additional pressure, consult factory.
- 900-1,500 HP models are available, consult factory.
- Other motor voltages available, consult factory.



STANDARD CONFIGURATION

| BURNER MODEL | C | D | E | F | G | H | J | K | L | M | N | P | Q | R | S |
|--------------|---------|---------|---------|----|--------|----|--------|--------|-------|--------|--------|--------|---|--------|--------|
| SIZE 3 | 130 3/4 | 122 1/2 | 161 3/8 | 58 | 20 1/2 | 58 | 42 3/8 | 31 3/8 | 6 7/8 | 44 3/8 | 61 3/8 | 31 3/4 | 8 | 71 3/4 | 42 7/8 |

| BURNER MODEL | T | U | V | W | X | Y | Z | CC | DD | EE | FF | GG | HH | JJ |
|--------------|----|----|--------|----|--------|----|--------|----|--------|--------|----|----|----|---------|
| SIZE 3 | 88 | 51 | 62 1/2 | 10 | 62 7/8 | 43 | 54 1/2 | 62 | 74 1/2 | 48 1/2 | 46 | 16 | 1 | 22 1/2° |