

ProFire XLL Series Product Information
Horizontal Configuration
Straight #2 Oil
67.2 - 92.4 MMBtu



The XL series straight oil burner is a forced draft packaged burner system. A backward curved impeller provides combustion air for various furnace pressures or high altitude applications. The rear-access cover is hinged for convenient inspection or service of the firing head components. Oil firing features an air or steam atomizing design. An oil metering valve and an atomizing nozzle are integral parts of this system. Compressor modules are shipped loose.

STANDARD EQUIPMENT

- 120/1/60 Control Circuit
- Panel Signal Lights: Power On, Main Fuel, Ignition, and Flame Failure
- Burner Mounted Junction Box w/Remote Panel
- Combustion Air Proving Switch
- Air Dampers w/Silencer
- Burner Mounting Flange
- Gas-Electric Ignition
- Hinged Rear Access Cover



SERIES FEATURES

S = STANDARD
O = OPTIONAL
N/A = NOT AVAILABLE

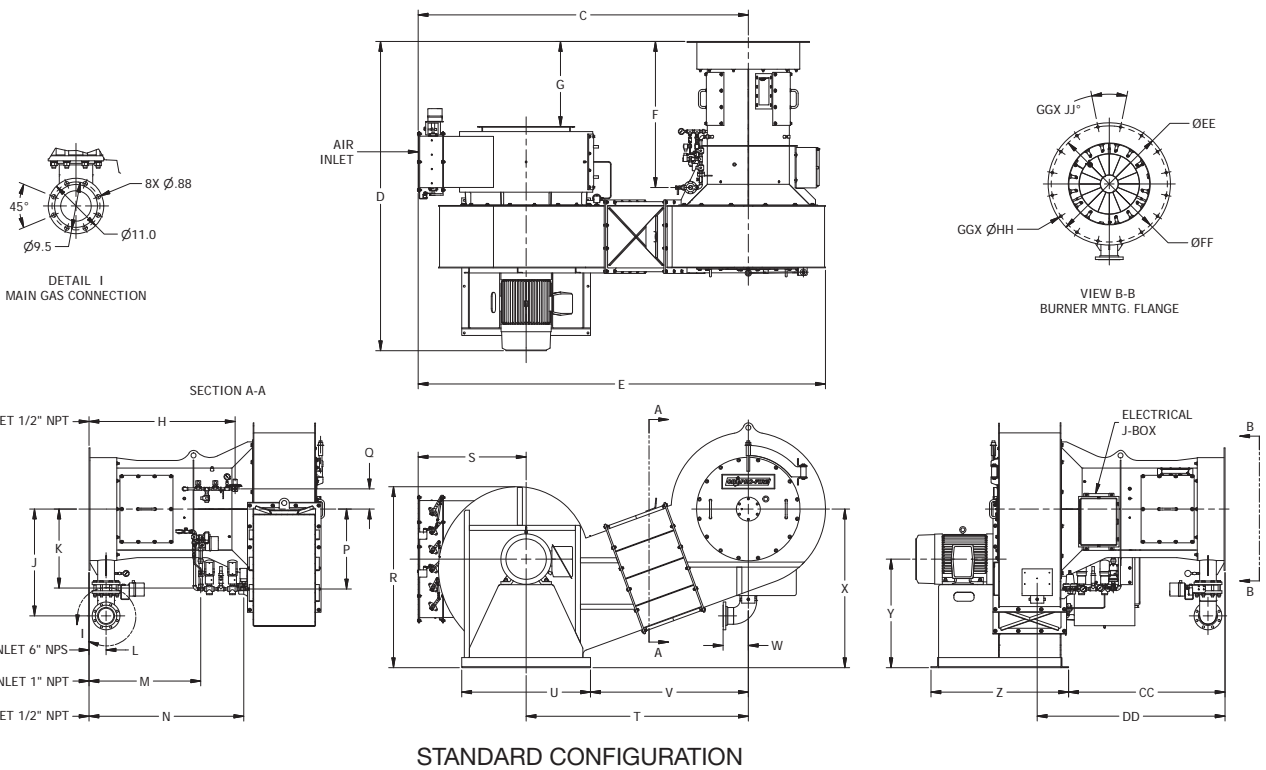
	XLL-672	XLL-756	XLL-840	XLL-924
Flame Safeguard with UV Scanner (IR Scanner Available)	S	S	S	S
1800 RPM Combustion Fan	S	S	S	S
Full Modulation Firing	S	S	S	S
Parallel Positioning System	S	S	S	S
Dry Oven	O	O	O	O
O ₂ Trim	O	O	O	O
Variable Frequency Drive (VFD)	O	O	O	O
2-Way Motorized Oil Valve w/ Proof of Closure (POC)	S	S	S	S
Burner Mounted Oil Flow Control Valve	S	S	S	S
Separately Mounted Air Compressor Module	S	S	S	S
3-Way Regulating Valve w/Relief Valve Upstream of Burner Oil Piping	S	S	S	S
High & Low Oil Pressure Switch	S	S	S	S
Atomizing Air Proving Switch & Fuel Oil Strainer (Shipped Loose)	S	S	S	S

SPECIFICATIONS & DIMENSIONS

BURNER MODEL	FRAME SIZE	GAS INPUT (MBH)	#2 OIL INPUT (GPH)	BHP @ 80% EFF.	MOTOR HP	SEPARATE COMP. MODULE MOTOR HP 3 PH.	BLOWER MOTOR VOLT/PH 60 HZ.	FURNACE PRESS. ("W.C.)
XLL-672	3	67,200	480	1,600	75	15	460/3	6.3
XLL-756	3	75,600	540	1,800	75	15	460/3	6.6
XLL-840	3	84,000	600	2,000	100	15	460/3	6.7
XLL-924	3	92,400	660	2,200	100	15	460/3	6.8

NOTES:

1. Oil input based on No. 2 oil at 140,000 Btu/gal.
2. Boiler overall efficiency of 80% estimated.
3. Blower wheel and motor HP is based on altitude up to 2,000 ft. above sea level. For higher altitude or 50 Hz. applications, consult factory.
4. Firing at higher furnace pressures de-rates the burner by approximately 5% per 1/2" of additional pressure, consult factory.
5. 900-1,500 HP models are available, consult factory.
6. Other motor voltages available, consult factory.



BURNER MODEL	C	D	E	F	G	H	J	K	L	M	N	P	Q	R	S
SIZE 3	130 3/4	122 1/2	161 3/8	58	33 3/4	58	42 3/8	31 3/8	6 7/8	44 3/8	61 3/8	31 3/4	8	71 3/4	42 7/8

BURNER MODEL	T	U	V	W	X	Y	Z	CC	DD	EE	FF	GG	HH	JJ
SIZE 3	88	51	62 1/2	10	62 7/8	43	54 1/2	62	74 1/2	48 1/2	46	16	1	22 1/2°