

ProFire XLL Series Product Information
Vertical Configuration
Straight #2 Oil
37.8 - 63.0 MMBtu



The XL series oil burner is a forced draft packaged burner system. A backward curved impeller provides combustion air for various furnace pressures or high altitude applications. The rear-access cover is hinged for convenient inspection or service of the firing head components. Compressor modules and main gas train components are shipped loose. CSD-1, GAP, FM, NFPA-85 and other regulatory agency control options are available.

STANDARD EQUIPMENT

- 120/1/60 Control Circuit
- Panel Signal Lights: Power On, Main Fuel, Ignition, and Flame Failure
- Burner Mounted Junction Box w/Remote Panel
- Combustion Air Proving Switch
- Air Dampers w/Silencer
- Burner Mounting Flange
- Gas-Electric Ignition
- Hinged Rear Access Cover



SERIES FEATURES

S = STANDARD
O = OPTIONAL
N/A = NOT AVAILABLE

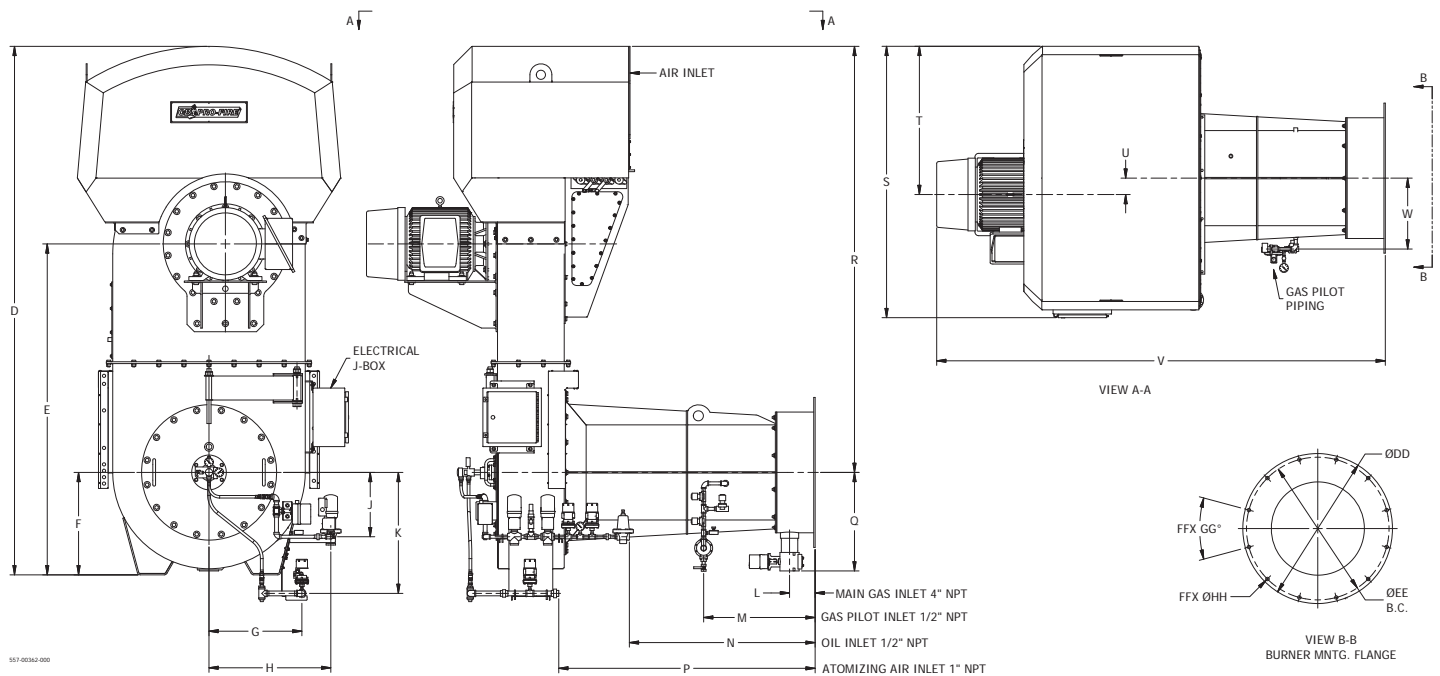
	XLL-378	XLL-462	XLL-546	
	XLL-420	XLL-504	XLL-588	XLL-630
Flame Safeguard with UV Scanner (IR Scanner Available)	S	S	S	S
3600 RPM Combustion Fan	S	S	S	S
Full Modulation Firing	S	S	S	S
Parallel Positioning System	S	S	S	S
Dry Oven	O	O	O	O
O ₂ Trim	O	O	O	O
Variable Frequency Drive (VFD)	O	O	O	O
2-Way Motorized Oil Valve w/ Proof of Closure (POC)	S	S	S	S
Burner Mounted Oil Flow Control Valve	S	S	S	S
Separately Mounted Air Compressor Module	S	S	S	S
3-Way Regulating Valve w/Relief Valve Upstream of Burner Oil Piping	S	S	S	S
High & Low Oil Pressure Switch	S	S	S	S
Atomizing Air Proving Switch & Fuel Oil Strainer (Shipped Loose)	S	S	S	S

SPECIFICATIONS & DIMENSIONS

BURNER MODEL	FRAME SIZE	#2 OIL INPUT (GPH)	BHP @ 80% EFF.	MOTOR HP	SEPARATE COMP. MODULE MOTOR HP 3 PH.	BLOWER MOTOR VOLT/ PH 60 HZ.	FURNACE PRESS. ("W.C.)
XLL-378	1	270	900	30	15	230/460/3	4.5
XLL-420	1	300	1,000	40	15	460/3	5.4
XLL-462	1	330	1,100	50	15	460/3	5.6
XLL-504	1	360	1,200	50	15	460/3	5.7
XLL-546	2	390	1,300	60	15	460/3	6.1
XLL-588	2	420	1,400	60	15	460/3	6.3
XLL-630	2	450	1,500	75	15	460/3	7.1

NOTES:

- Oil input based on No. 2 oil at 140,000 Btu/gal.
- Boiler overall efficiency of 80% estimated.
- Blower wheel and motor HP is based on altitude up to 2,000 ft. above sea level. For higher altitude or 50 Hz. applications, consult factory.
- Firing at higher furnace pressures de-rates the burner by approximately 5% per 1/2" of additional pressure, consult factory.
- Other motor voltages available, consult factory.



STANDARD CONFIGURATION

BURNER MODEL	D	E	F	G	H	J	K	L	M	N	P	Q
SIZE 1	137 1/4	83 3/8	26 5/8	24	31 3/4	17 5/8	34	6 5/8	28	50 7/8	70 1/8	23 3/8
SIZE 2	144 1/2	90 1/2	28	25 1/2	33 3/8	17 5/8	33 1/8	7	30 1/2	50 7/8	70 1/8	27

BURNER MODEL	R	S	T	U	V	W	DD	EE	FF	GG	HH
SIZE 1	110 3/4	72 3/8	38 1/2	3 5/8	113 1/4	16 1/8	30	28 1/4	12	30°	1
SIZE 2	116 1/2	74 1/4	40 1/2	4 1/2	122 3/4	19 3/8	41	39	12	30°	1