

ProFire XLLG Series Product Information
Vertical Configuration
Combination Gas / #2 Oil
37.8 - 63.0 MMBtu



The XL series combination gas/oil burner is a forced draft packaged burner system. A backward curved impeller provides combustion air for various furnace pressures or high altitude applications. The rear-access cover is hinged for convenient inspection or service of the firing head components. XL series combination gas/oil burners change from one fuel to the other by manually retracting the oil gun, and with the simple flip of a switch. No burner modifications or readjustments are required when changing from one fuel to the other. Compressor modules and main gas train components are shipped loose. CSD-1, GAP, FM, NFPA-85 and other regulatory agency control options are available.



STANDARD EQUIPMENT

- 120/1/60 Control Circuit
- Panel Signal Lights: Power On, Main Fuel, Ignition, and Flame Failure
- Burner Mouted Junction Box w/Remote Panel
- Combustion Air Proving Switch
- Air Dampers w/Silencer
- Burner Mounting Flange
- Gas-Electric Ignition
- Hinged Rear Access Cover
- Fuel Changeover Switch

SERIES FEATURES

S = STANDARD
 O = OPTIONAL
 N/A = NOT AVAILABLE

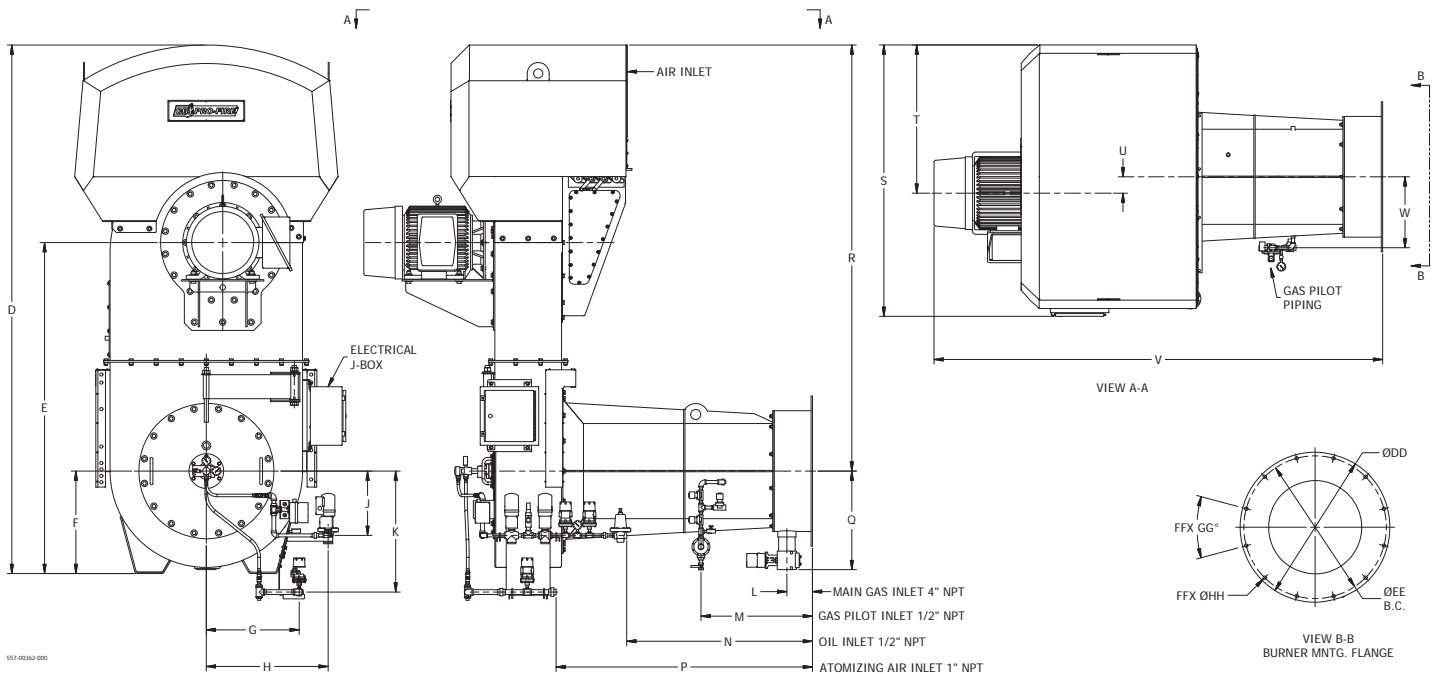
	XLLG-378	XLLG-462	XLLG-546	
	XLLG-420	XLLG-504	XLLG-588	XLLG-630
Flame Safeguard with UV Scanner (IR Scanner Available)	S	S	S	S
3600 RPM Combustion Fan	S	S	S	S
Full Modulation Firing	S	S	S	S
Parallel Positioning System	S	S	S	S
Dry Oven	O	O	O	O
O ₂ Trim	O	O	O	O
Variable Frequency Drive (VFD)	O	O	O	O
High & Low Gas Pressure Switches	S	S	S	S
Normally Open (N.O.) Vent Valve	S	S	S	S
Main Gas Regulator & (2) Gas Shutoff Cocks	S	S	S	S
Gas Flow Control Valves Mounted on Burner Piping	S	S	S	S
2-Way Motorized Oil Valve w/ Proof of Closure (POC)	S	S	S	S
Burner Mounted Oil Flow Control Valve	S	S	S	S
Separately Mounted Air Compressor Module	S	S	S	S
3-Way Regulating Valve w/Relief Valve Upstream of Burner Oil Piping	S	S	S	S
High & Low Oil Pressure Switch	S	S	S	S
Atomizing Air Proving Switch & Fuel Oil Strainer (Shipped Loose)	S	S	S	S

SPECIFICATIONS & DIMENSIONS

BURNER MODEL	FRAME SIZE	GAS INPUT (MBH)	#2 OIL INPUT (GPH)	BHP @ 80% EFF.	MOTOR HP	SEPARATE COMP. MODULE MOTOR HP 3 PH.	BLOWER MOTOR VOLT/ PH 60 HZ.	FURNACE PRESS. ("W.C.)	GAS PRESSURE REQUIRED (PSI)
XLLG-378	1	37,800	270	900	30	15	230/460/3	4.5	10
XLLG-420	1	42,000	300	1,000	40	15	460/3	5.4	10
XLLG-462	1	46,200	330	1,100	50	15	460/3	5.6	10
XLLG-504	1	50,400	360	1,200	50	15	460/3	5.7	10
XLLG-546	2	54,600	390	1,300	60	15	460/3	6.1	10
XLLG-588	2	58,800	420	1,400	60	15	460/3	6.3	10
XLLG-630	2	63,000	450	1,500	75	15	460/3	7.1	10

NOTES:

1. Gas input based on natural gas at 1,000 Btu/cu.ft. and 0.60 gravity.
2. Gas pressure based on zero furnace pressure. For total pressure at manifold, add furnace pressure.
3. Oil input based on No. 2 oil at 140,000 Btu/gal.
4. Boiler overall efficiency of 80% estimated.
5. Blower wheel and motor HP is based on altitude up to 2,000 ft. above sea level. For higher altitude or 50 Hz. applications, consult factory.
6. Firing at higher furnace pressures de-rates the burner by approximately 5% per 1/2" of additional pressure, consult factory.
7. Other motor voltages available, consult factory.



STANDARD CONFIGURATION

BURNER MODEL	D	E	F	G	H	J	K	L	M	N	P	Q
SIZE 1	137 1/4	83 3/8	26 5/8	24	31 3/4	17 5/8	34	6 5/8	28	50 7/8	70 1/8	23 3/8
SIZE 2	144 1/2	90 1/2	28	25 1/2	33 3/8	17 5/8	33 1/8	7	30 1/2	50 7/8	70 1/8	27

BURNER MODEL	R	S	T	U	V	W	DD	EE	FF	GG	HH
SIZE 1	110 3/4	72 3/8	38 1/2	3 5/8	113 1/4	16 1/8	30	28 1/4	12	30°	1
SIZE 2	116 1/2	74 1/4	40 1/2	4 1/2	122 3/4	19 3/8	41	39	12	30°	1